

**KVM over IP that delivers seamless, secure remote PC access and control, and features both high-quality video and audio.**

Designed for image critical applications, ADDERLink Portal R110 is an ARDx™ technology enabled, ZeroU™ transmitter that provides secure, low-latency keyboard, video, mouse and audio connectivity via the Internet or a local network.

## ADDERLink® Portal R110 (DisplayPort)

### Features



#### Hardware remote KVM

With DisplayPort video and USB2.0 for keyboard, mouse and other HID devices. Unlike remote access software it operates out-of-band, enabling BIOS control of the target PC during boot and securely separating remote users from the local network.



#### ARDx Enabled

ADDERLink Portal is ARDx enabled and therefore requires ARDx Viewer (download from the ARDx Viewer product page), which provides a seamless user experience and powerful admin tools for managing connections and users.



#### High quality audio and video

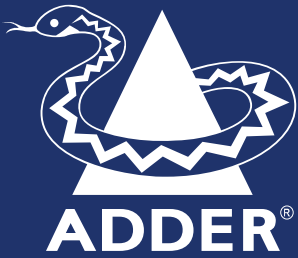
Experience exceptional media streaming with HD 1920x1080 resolution at ultra-smooth 60Hz frame rates, 4:4:4 accurate color and 16-bit 44.1kHz PCM stereo audio. Fluid motion, pure color and clear text reproduction for image critical applications.



#### Seamless User Experience

Inherently low latency provides precision control as though you are operating the host PC directly. On a network with suitable capacity, up to eight users can access concurrently without performance degradation.





### Highly Secure

Enterprise-grade security ensures your connection is safe. AES-256 encryption and RSA-2048 authentication offer the highest level of protection, trusted by security agencies and financial institutions worldwide.



### Network Capability

For critical performance applications, ADDERLink Portal is optimized for use over a Local Area Network (LAN). Wide Area Network (WAN) connectivity for remote internet access can be achieved through a firewall port or Virtual Private Network (VPN).



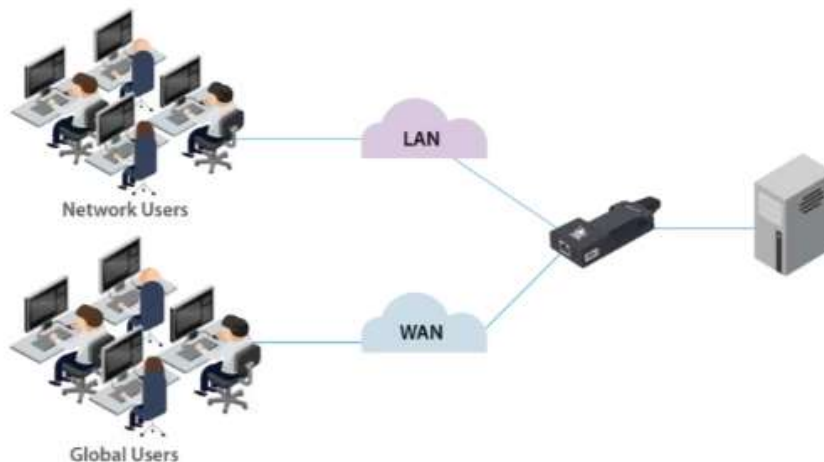
### Simple Installation

The Zero U™ dongle form factor requires no rack space. USB power from the host PC means no bulky power supply or spare wall socket is required although an external supply can be used.



### Target any OS

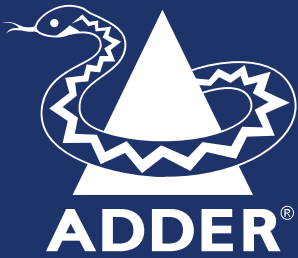
Unlike remote access via software, the ADDERLink Portal can control any PC with a KVM connection, regardless of the Operating System. Advantageous for installations where the OS may be considered legacy, or configuration change is prohibited.



Video Information (1 Screen)	
Maximum Resolution (1 Screen)	1920 x 1080
Frame Rate (1 Screen)	60
Color Depth (1 Screen)	8 bpc
Video Additional Information	
Video Additional Information	HD@60Hz 4:4:4 chroma with dynamic frame-rate back-off under limited bandwidth conditions
Computer Connections	
USB A	1x 2.0, True Emulation (HID Only)
Full Size DisplayPort	1x 1.2
Link Ports	
8p8c (RJ45)	1x
Audio Connections	
Audio Type	Digital
Channels	2x
Audio Direction	Output only
Audio Additional Information	PCM
Size (bit)	16
Speed (kHz)	44.1
Audio In Port	1x USB
Network Support	
Bandwidth	1GbE
10/100 Support	No
Power Source	
USB powered	2x
5V	1x
Power Additional Information	USB Power: 2 x USB A (2x500mA@5V 5W). External Power: 5Vdc, 1A (LPS)
Power Consumption	
Maximum Power (Watts)	5
Maximum Power (Current)	1
Typical Power (Watts)	3
BTU (BTU/hr)	10.2
Physical Design	

<b>Construction Material</b>	ABS and aluminum construction
<b>U size</b>	0
<b>Width (mm) / (in.)</b>	55 / 2.2
<b>Height (mm) / (in.)</b>	25 / 1
<b>Depth (mm) / (in.)</b>	110 / 4.3
<b>Flying Lead Length (mm)</b>	300
<b>Weight (kg) / (lb)</b>	0.2 / 0.4
<b>Compatibility</b>	
<b>OS Compatibility</b>	All known operating systems
<b>Approvals and Standards</b>	
<b>Approvals</b>	CE, ICES, UKCA
<b>Standards</b>	ANSI 63.4, EN/IEC 62368-1, EN55032 /CISPR 32, EN55035/CISPR 35, EN61000-3-2, EN61000-3-3, EN63000, FCC pt15B
<b>Other</b>	Cal Prop 65, China ROHS, EU REACH, UK REACH
<b>Packing Box</b>	
<b>Length (mm) / (in.)</b>	292 / 11.5
<b>Width (mm) / (in.)</b>	245 / 9.6
<b>Depth (mm) / (in.)</b>	55 / 2.2
<b>Weight (kg) / (lb)</b>	0.5 / 1.1





### What's in the Box?

1x ADDERLink Portal unit with DP connector

---

1x Quick Start Guide

### Ordering Information

ALPR110T-DP	ADDERLink Portal R110 (DisplayPort) KVM-over-IP device with USB and DP video
-------------	--

### Related Accessories (Sold Separately)

ADDER® Power Supply Unit 5volt DC 2.5A

---

Adder and the Adder logo are trademarks of Adder Technology Ltd, Cambridge, UK. All other trademarks are the property of their respective owner and may be registered in the United States Patent and Trademark Office and in other countries. Information contained in this data sheet is up-to-date and correct as at the date of issue. As Adder Technology cannot control or anticipate the conditions under which this product may be used, each user should review the information in the specific context of planned use. Images are for illustrative purposes only. Adder reserves the right to make changes to this specification without notice.

Copyright 2025 | Adder Technology Ltd.